

CRCF

I/C's	744 - 473A = 64%	1283 - 909A = 71%	671 - 437A = 65%
G's	121 = 16%	139 = 10%	52 = 7%
Unanswered	82 = 68%	135 = 97%	48 = 92%

NWSCF

I/C's	1003 - 609A = 61%	727 - 374A = 51%	254 - 114A = 45%
G's	137 = 14%	124 = 17%	42 = 17%
Unanswered	50 = 36%	15 = 12%	3 = 7%

SESCF

I/C'S	102 - 80A = 78%	150 - 119A = 79%	74 - 66A = 89%
G'S	8 = .08%	23 = 15%	12 = 16%
Unanswered	0 = 0%	21 = 91%	9 = 75%

CCWC

I/C'S	65 - 36A = 55%	51 - 19A = 37%
G's	8 = 12%	13 = 25%
Unanswered	4 = 50%	6 = 46%

### Medical Complaints

	2010	<u>State Wide</u> 2011	2012 (thru June)
I/C's	1081 - 584A = 54%	1233 - 678A = 55%	481 - 269A = 56%
G's	231 = 21%	268 = 22%	103 = 21%
<u>SSCF</u>			
I/C's	238 - 16A = 7%	265 - 58A = 21%	127 - 59A = 46%
G's	57 = 23%	80 = 30%	33 = 26%
<u>NSCF</u>			
I/C's	285 - 159A = 56%	231 - 105A = 45%	86 - 27A = 31%
G's	106 = 37%	86 = 37%	36 = 42%
<u>MVRCF</u>			
I/C's	81 - 58A = 72%	100 - 66A = 66%	39 - 30A = 77%
G's	2 = 2%	14 = 14%	3 = 7%
<u>NERCF</u>			
I/C's	49 - 33A = 67%	78 - 50A = 64%	17 - 7A = 41%
G's	6 = 12%	11 = 14%	2 = 12%
<u>CRCF</u>			
I/C's	173 - 114A = 65%	352 - 261A = 74%	153 - 11A = 73%
G's	29 = 17%	39 = 11%	12 = 7%
<u>SESCF</u>			
I/C's	4 - 3A = 75%	19 - 17A = 97%	7 - 6A = 85%
G's	1 = 25%	2 = 10%	3 = 43%
<u>NWSCF</u>			
I/C's	147 - 127A = 87%	169 - 119A = 70%	46 - 26A = 57%
G's	10 = 6%	30 = 17%	11 = 24%

## GRIEVANCES AS INDICATORS OF INSTITUTIONAL CLIMATE

---

What exactly can inmate grievances tell us?

## WHAT WE KNOW

---

- o INMATES RECEIVE GRIEVANCE FORMS UPON DEMAND.
- o THERE ARE NO LIMITS ON THE NUMBER OF GRIEVANCES AN INMATE MAY FILE, HOWEVER, STAFF CONTROL THE SUPPLY.
- o AN AVERAGE OF 1,000 GRIEVANCES PER QTR.
- o GRIEVANCE DATA BASE HAS 66 SEPARATE ENTRY OPTIONS.
- o DATA ENTRY PERSONNEL DECIDE WHICH CATEGORY A PARTICULAR GRIEVANCE FITS IN.

## CATEGORIES

---

- o 26 BROAD CATEGORIES, EACH WITH MULTIPLE SUB-CATEGORIES FOR A TOTAL OF 66, SEPARATE, ENTRY POSSIBILITIES
- o EXAMPLE:  
CATEGORY--CONFLICT
  - Staff
  - Volunteer
  - Inmate

## HOW CAN WE ACHIEVE A MACRO VIEW FROM MICRO DATA?

---

- o GIVEN THE LEVEL OF DETAIL, WHAT CAN BE CURRENTLY LEARNED AT A GLANCE?
  
- o ANSWER—VERY LITTLE

**SOLUTION**

---

- o SORT THE GRIEVANCES INTO "BANDS"
- o RED
- o BLUE
- o GREEN

**GRIEVANCE BANDS**

---

- o RED (26)
- o **HOT BUTTON ITEMS**
  - Discrimination
  - Harassment
  - Visiting
  - Due Process (liberty issues)
  - CONFLICT
  - MISCONDUCT
  - FOOD

**GRIEVANCE BANDS**

---

- o BLUE (24)
- o Program & Treatment
  - ERT
  - WORK
  - MEDICAL
  - MENTAL HEALTH
  - CLASSIFICATION

**GRIEVANCE BANDS**

---

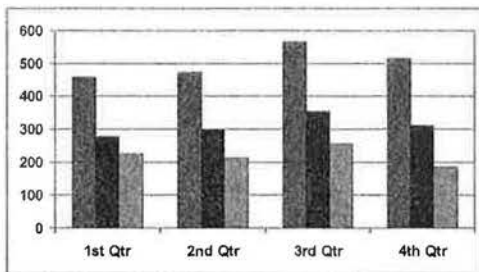
- o GREEN (16)
- o ENVIRONMENTAL
  - TEMPERATURE
  - NOISE
  - TELEPHONE
  - RECREATION
  - CANTEEN
  - SMOKE

### PERSPECTIVE WHEN GRIEVANCES ARE GROUPED BY BANDS

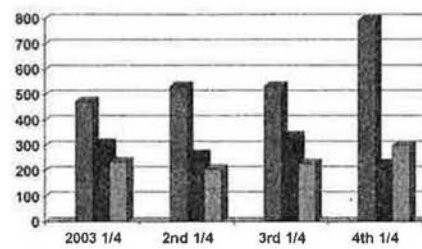
- o Department Wide
- o Two Institutions, NSCF & NWSCF
- o Calendar year, by quarter.

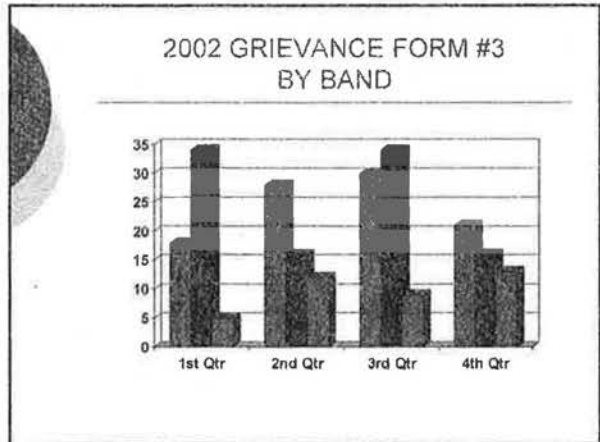
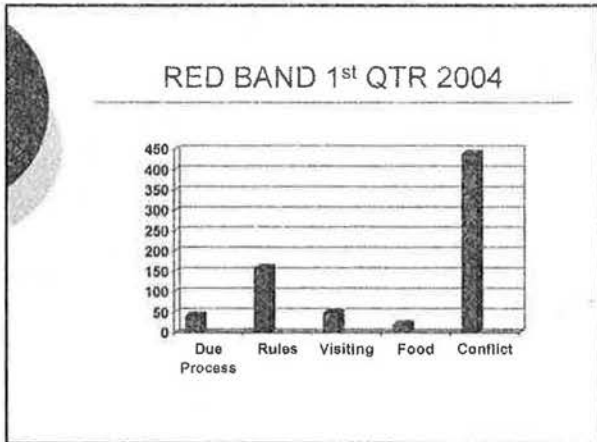
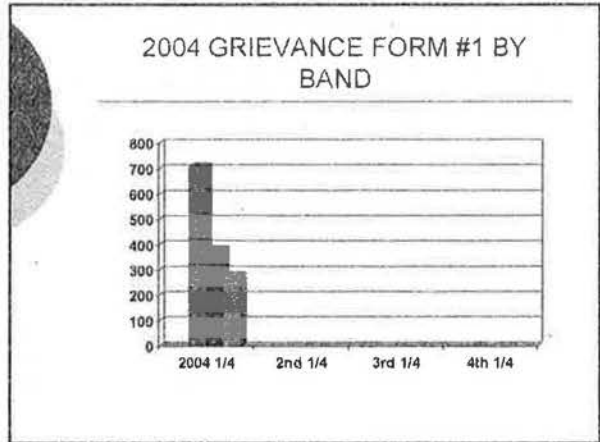
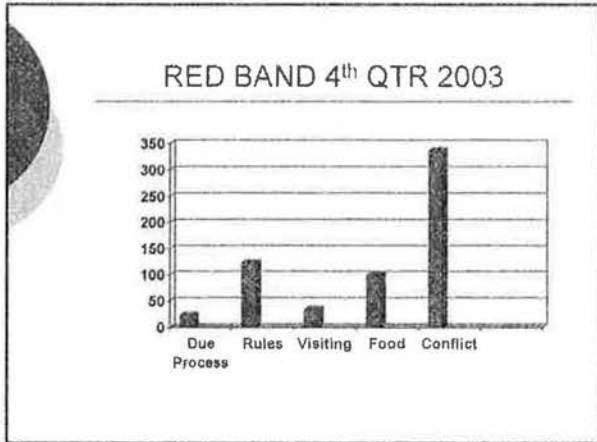
### DEPARTMENT PERSPECTIVE

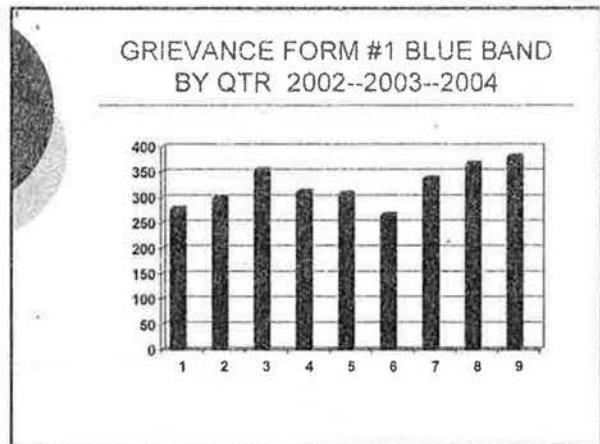
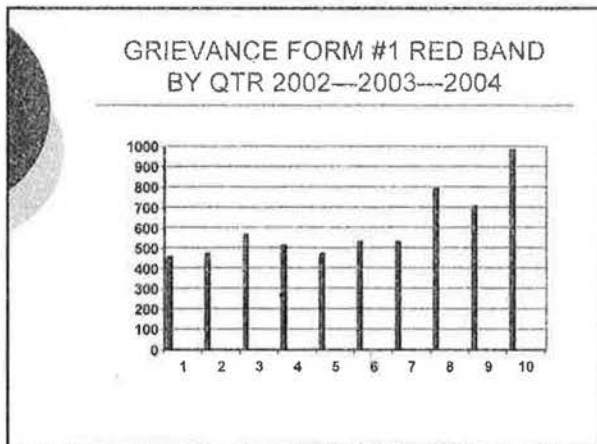
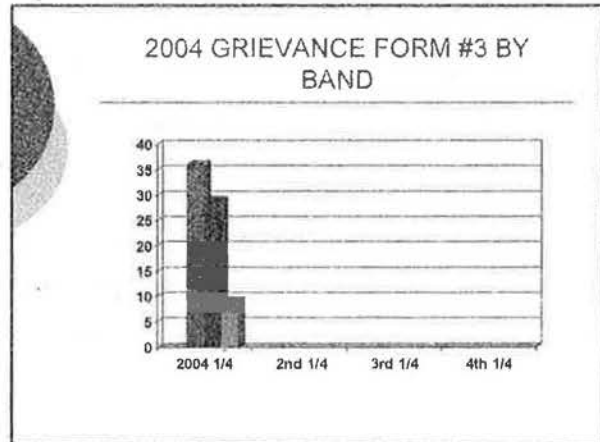
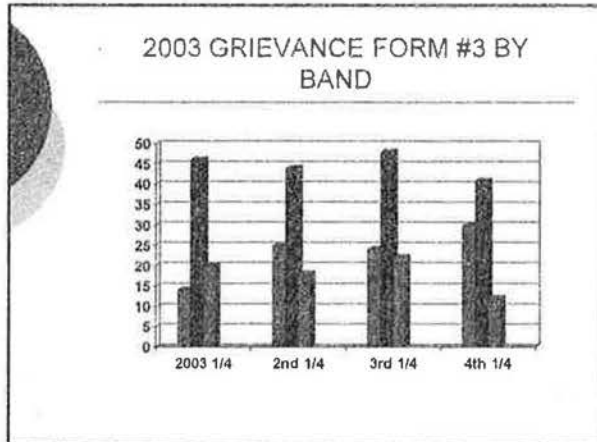
### 2002 GRIEVANCE FORM #1 BY BAND



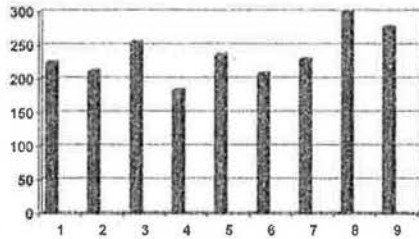
### 2003 GRIEVANCE FORM #1 BY BAND



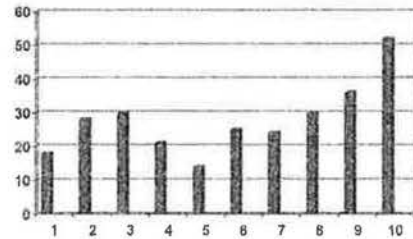




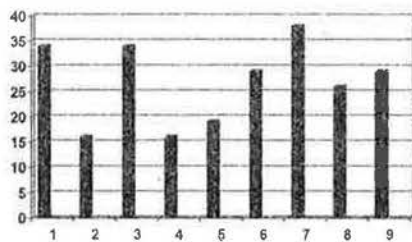
GRIEVANCE FORM #1 GREEN BAND  
BY QTR 2002—2003--2004



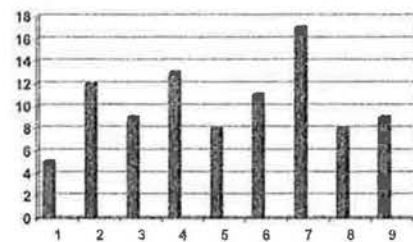
GRIEVANCE FORM #3 RED BAND  
BY QTR 2002—2003--2004



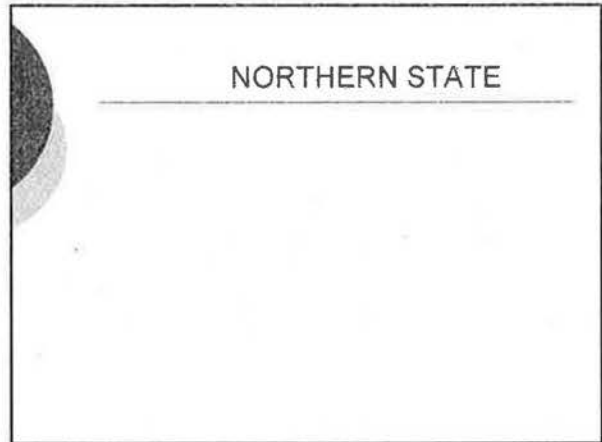
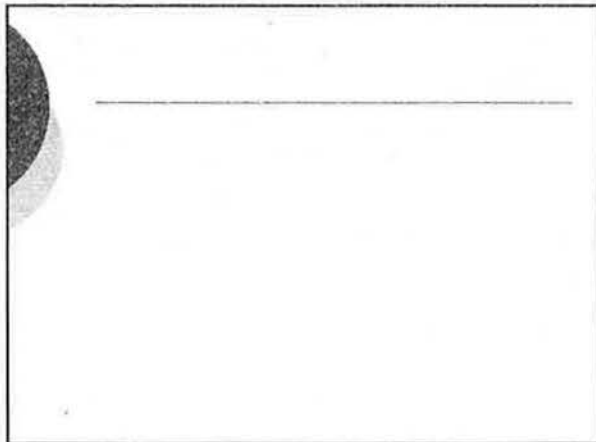
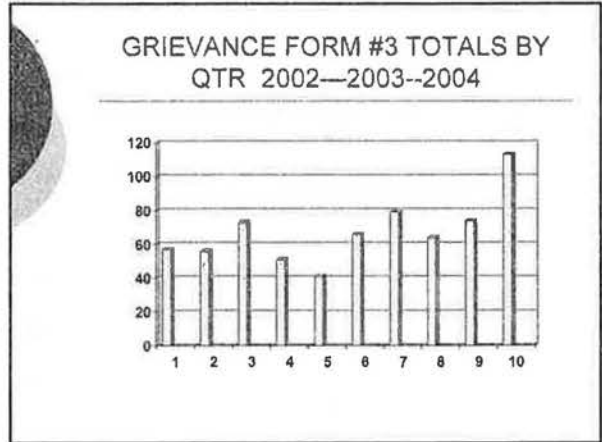
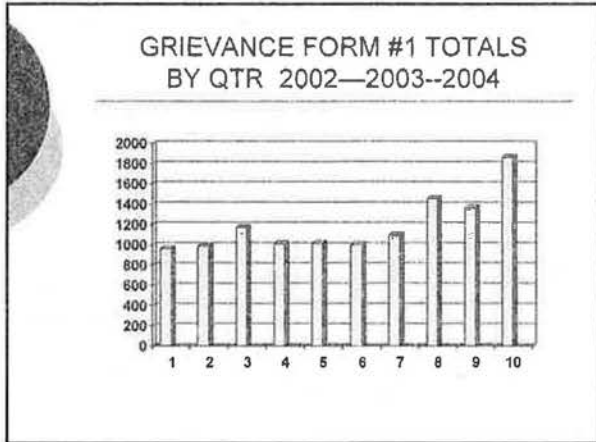
GRIEVANCE FORM #3 BLUE BAND  
BY QTR 2002-2003-2004

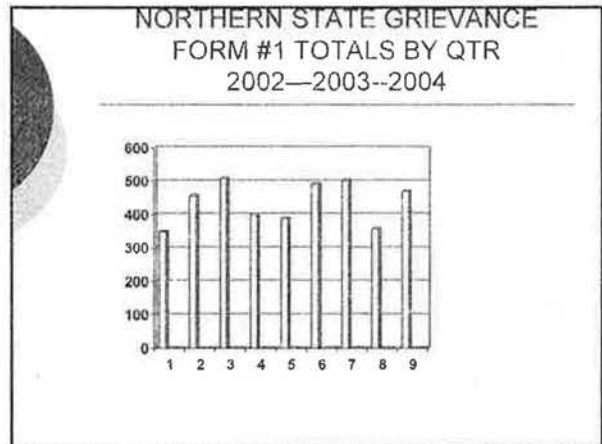
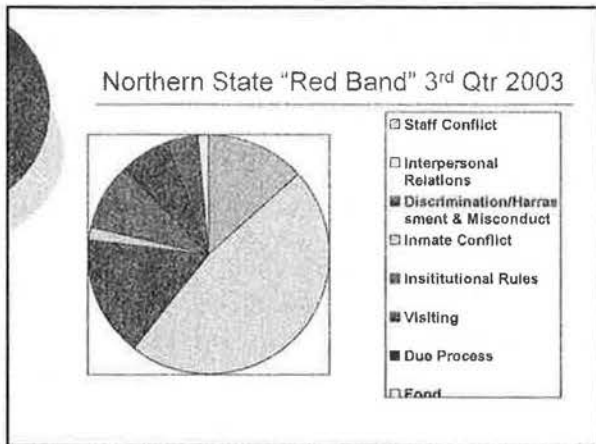
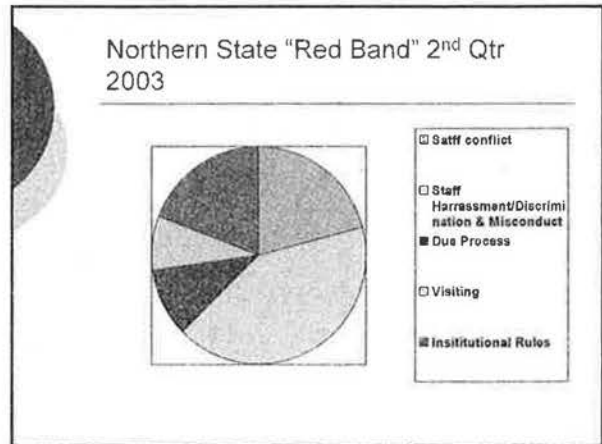
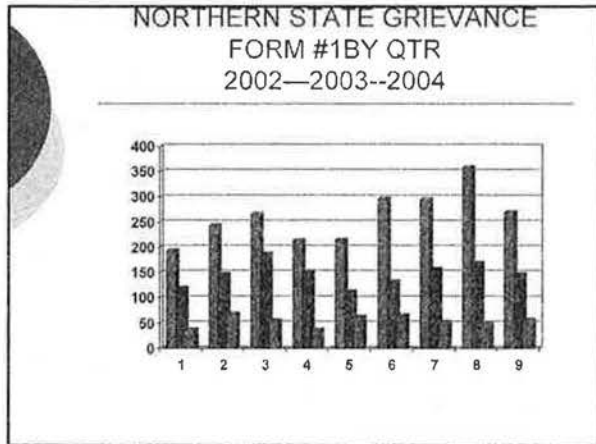


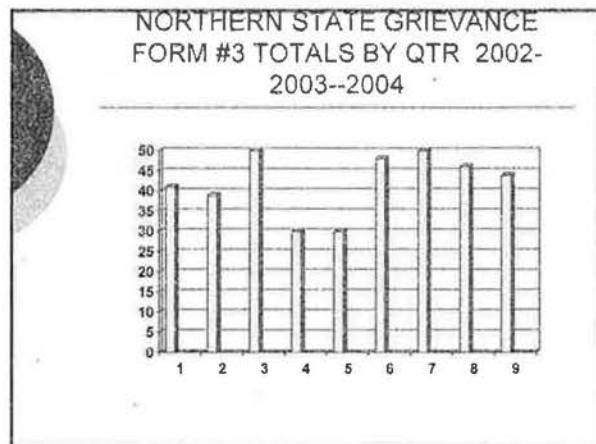
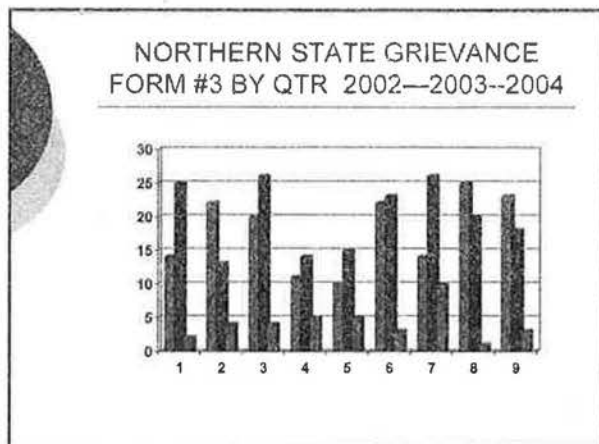
GRIEVANCE FORM #3 GREEN BAND  
BY QTR 2002—2003--2004



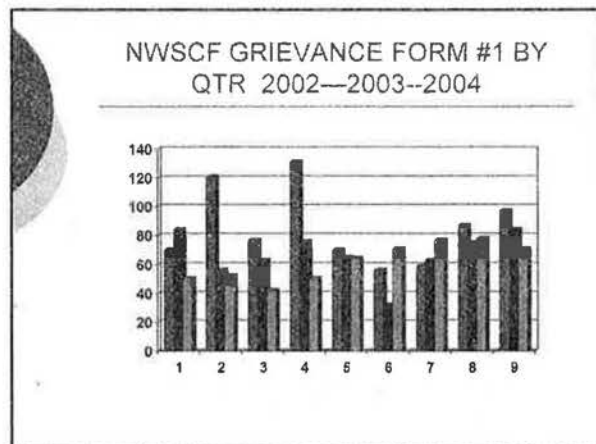


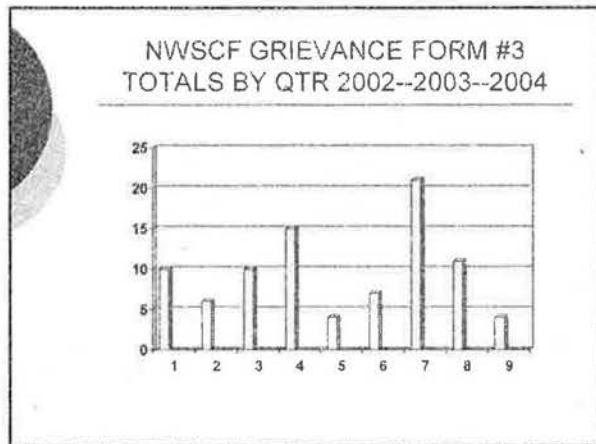
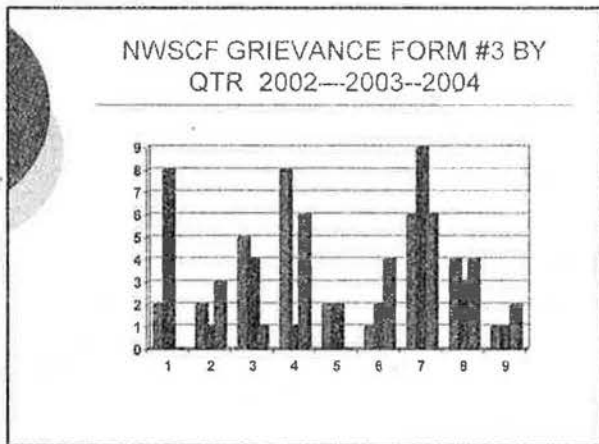
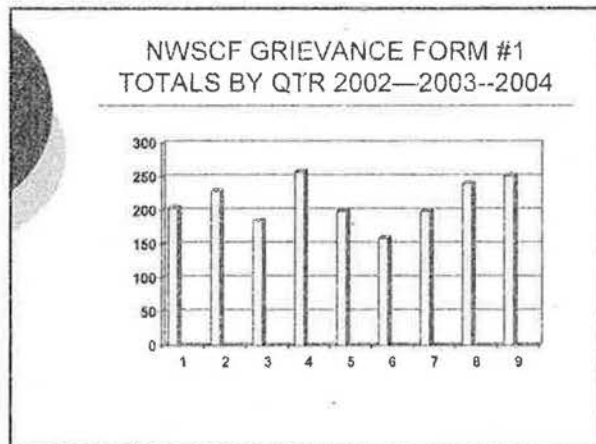
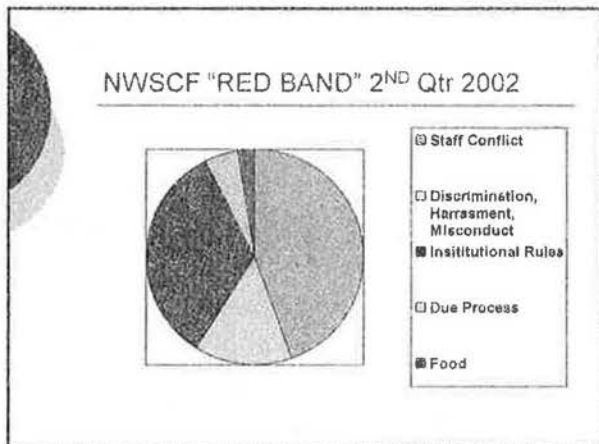






NWSCF





## GRIEVANCES AS INDICATORS OF INSTITUTIONAL CLIMATE

---

What exactly can inmate grievances  
tell us?

## WHAT WE KNOW

---

- INMATES RECEIVE GRIEVANCE FORMS UPON DEMAND.
- THERE ARE NO LIMITS ON THE NUMBER OF GRIEVANCES AN INMATE MAY FILE, HOWEVER, STAFF CONTROL THE SUPPLY.
- AN AVERAGE OF 1,000 GRIEVANCES PER QTR.
- GRIEVANCE DATA BASE HAS 66 SEPARATE ENTRY OPTIONS.
- DATA ENTRY PERSONNEL DECIDE WHICH CATEGORY A PARTICULAR GRIEVANCE FITS IN.

## CATEGORIES

---

- 26 BROAD CATEGORIES, EACH WITH MULTIPLE SUB-CATEGORIES FOR A TOTAL OF 66, SEPARATE, ENTRY POSSIBILITIES
- EXAMPLE:  
CATEGORY--CONFLICT
  - Staff
  - Volunteer
  - Inmate

## HOW CAN WE ACHIEVE A MACRO VIEW FROM MICRO DATA?

---

- GIVEN THE LEVEL OF DETAIL, WHAT CAN BE CURRENTLY LEARNED AT A GLANCE?
  
- ANSWER--VERY LITTLE

**SOLUTION**

---

o SORT THE GRIEVANCES INTO "BANDS"

- o RED
- o BLUE
- o GREEN

**GRIEVANCE BANDS**

---

o RED (26)

- o **HOT BUTTON ITEMS**
  - Discrimination
  - Harassment
  - Visiting
  - Due Process (liberty issues)
  - CONFLICT
  - MISCONDUCT
  - FOOD

**GRIEVANCE BANDS**

---

o BLUE (24)

- o Program & Treatment
  - ERT
  - WORK
  - MEDICAL
  - MENTAL HEALTH
  - CLASSIFICATION

**GRIEVANCE BANDS**

---

o GREEN (16)

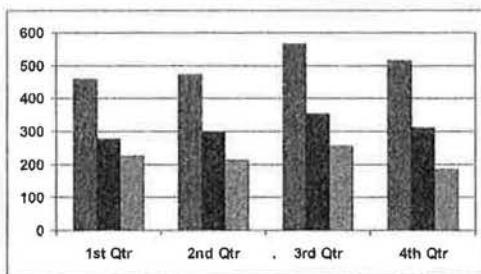
- o ENVIRONMENTAL
  - TEMPERATURE
  - NOISE
  - TELEPHONE
  - RECREATION
  - CANTEEN
  - SMOKE

PERSPECTIVE WHEN GRIEVANCES ARE GROUPED BY BANDS

- o Department Wide
- o Two Institutions, NSCF & NWSCF
- o Calendar year, by quarter.

DEPARTMENT PERSPECTIVE

2002 GRIEVANCE FORM #1 BY BAND



2003 GRIEVANCE FORM #1 BY BAND

